

# SEDIMENT COLLECTION BASINS & SYSTEM

## SEDIMENT COLLECTION BASINS

- Best Management Practices
- Storm Water Run Off Protection of Streams, Ponds and Waterways
- Easily Cleaned Sediment Removed Without Permit
- Excellent for Maintenance of Yards and Horse Farms
- Avoid Unnecessary Involvement with Governing Agencies
- Holds 15 Yards Sediment
- Creating Drainage Path with Stone or Asphalt Swale or Berm to Carry Sediment on Gravel or Dirt Roads
- No Need for Outlet if You Create Drywell System
- In Ground, Not Visible
- Reinforced Concrete Durable and Long Lasting
- Be Proactive - Avoid Going into Wetland and Water Ways
- Keep Waterways Clean and Prevent Flooding Problems
- Promoting Water Quality, Natural Habitat and Environment, for All of Us, Including Our Fish, Turtle, Salamander and Frog Friends
- Fresh Flowing Waterways Prevent Overloads of Algae, Mosquitos and Chemical Accumulations

Typical installation Cost \$5,000 to \$15,000  
Subject to Modifications Cost and Adjustments

## Environmental Engineering

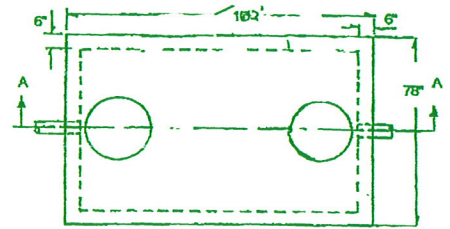
### Re Landscapes

PO Box 502  
Bedford Hills, NY 10507  
Tele: 845.277.3777  
Fax: 845.277.3778  
[landscapes@relandscapes.com](mailto:landscapes@relandscapes.com)

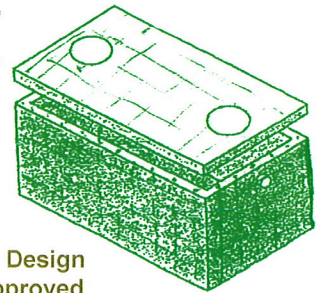
1000-OS-M-H20

(1000 Gallon Oil Separator-Monolithic)

Length	Width	Height
102"	78"	71"



Concrete 4000 PSI 28 days  
Steel Reinforcement:  
ASTM-A-615-68,  
Grade 40. 1"  
Minimum Cover



Monolithic Design  
CT DEP Approved

